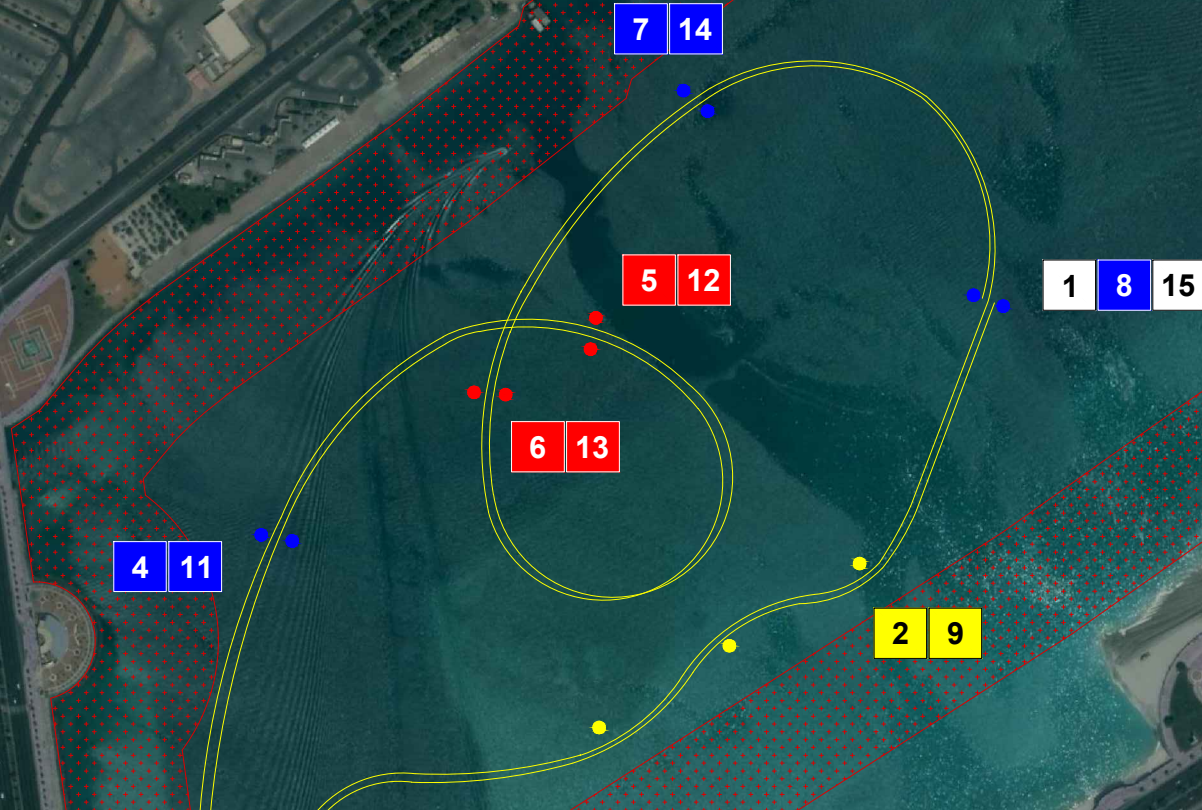




# ABU DHABI 2010

Start - Gate 1 (horizontal)  
 proceed to Gate 2 (chicane)  
 turn left to Gate 3 (horizontal) then pull  
 up  
 turn right & level off Gate 4 (horizontal)  
 turn right to Gate 5 (left knife)  
 turn right to Gate 6 (left knife)  
 turn right to Gate 7 (horizontal)  
 turn right to Gate 8 (horizontal)  
 proceed to Gate 9 (chicane)  
 turn left to Gate 10 (horizontal) then  
 pull up  
 turn right & level off Gate 11  
 (horizontal)  
 turn right to Gate 12 (left knife)  
 turn right to Gate 13 (left knife)  
 turn right to Gate 14 (horizontal)  
 Finish - Gate 15 (horizontal)

Version: Final 1  
 Average Speed: 295 kph  
 Track Length: 5647m  
 Average Time: 68 secs



ABU10 GPS DATA		HDG-T (VAR 1E)
1/8/15	24°28'17.36"N / 54°19'51.05"E	021 / 201
2/9a	24°28'10.37"N / 54°19'47.24"E	-
2/9b	24°28'8.10"N / 54°19'43.50"E	057 / 237
2/9c	24°28'5.87"N / 54°19'39.54"E	-
3/10	24°28'1.33"N / 54°19'30.44"E	003 / 183
4/11	24°28'11.00"N / 54°19'30.11"E	009 / 189
5/12	24°28'16.48"N / 54°19'39.43"E	098 / 278
6/13	24°28'14.90"N / 54°19'36.40"E	003 / 183
7/14	24°28'22.80"N / 54°19'42.57"E	040 / 220